



TRACE

LATINA

www.francetvpub.fr



france•tvpublicité
Le monde change. La pub aussi.



TRACE Latina is the premium channel entirely dedicated to Latino music and culture..

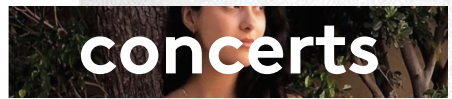


From Salsa to Reggaeton through Hip Hop, Pop, Merengue or **Bachata**...Find the best urban Latin beats as well as interviews, concerts, and documentaries that showcase the Latino scene.

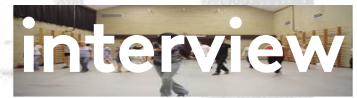
Programs



hit music



concerts



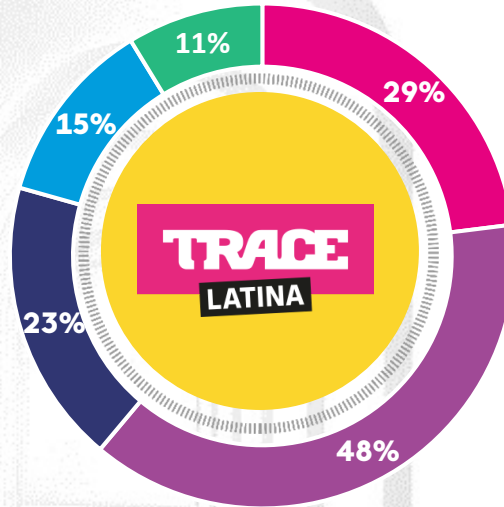
interview



documentaries

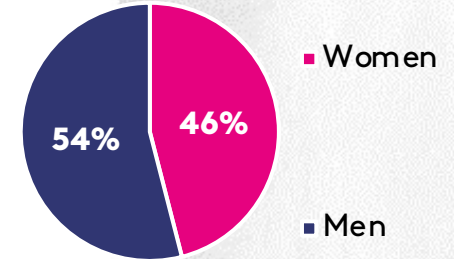
TRACE LATINA, A CHANNEL THAT IS STRENGTHENING ITS POSITION AMONG 15/24 AGE GROUP

STRONG AFFINITY
among the 35-49 age group
(ind.127)



■ 35-49 yrs ■ 50 yrs and + ■ ICSP+ ■ MFHB - 50 yrs ■ 15-24 yrs

790k
viewers each month



FLAGSHIP PROGRAMS



HIT 10

If you are looking for the 10 biggest Latino hits of the moment, you will find them all in the official top ten of TRACE LATINA's HIT 10 every day at 10am and 5:15pm, only on TRACE LATINA.



HIT30

The 30 most popular music videos of the week feature in HIT 30, including new entries, who's up and who's down. And, of course, the all-important question of the week's number 1. HIT 30 provides the answer every Saturday at 10am and 8pm, rebroadcast on Sunday at noon and Wednesday at 10am on TRACE LATINA; HIT 30 every Saturday at 10am and 8pm only on TRACE LATINA.



HIT30BYMARACUJAM

HIT 30 by MARACUJAM is the ranking of the most streamed Afro Latino hits. Find the 100% Afro Latino selection created by the Maracujam team as well as information on your favorite artists in Hit 30 By Maracujam, every Friday at 10pm, rebroadcast Sunday at 5pm exclusively on TRACE LATINA.